

DUNEDIN NETWORK PLANNING

Dunedin transport network scenarios workshop

STAKEHOLDER WORKSHOP 6-7 NOVEMBER 2018 – UPDATED

NZTA • DCC • ORC
CONNECTING
DUNEDIN



Welcome!



DUNEDIN NETWORK PLANNING



STAKEHOLDER WORKSHOP 6–7 NOVEMBER 2018



NZTA + DCC + ORC CONNECTING DUNEDIN

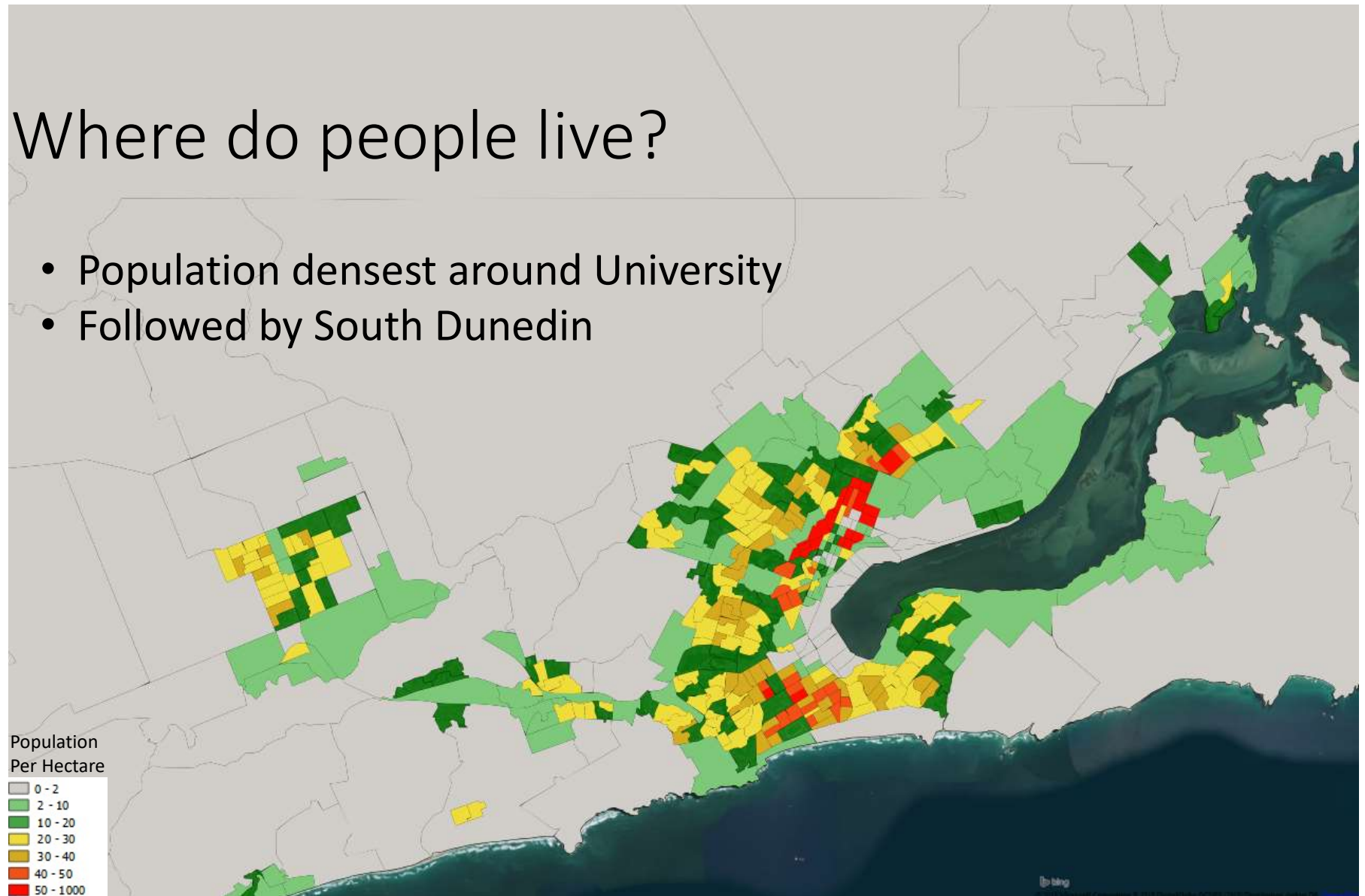
The way we
move...

Current Travel Metrics



Where do people live?

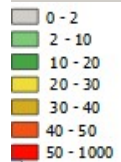
- Population densest around University
- Followed by South Dunedin



Where do people work?

- Most employment in CBD

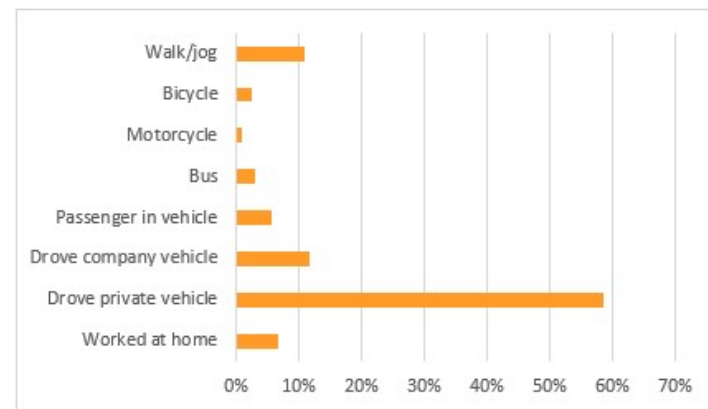
Employment
Per Hectare



Census Journey to Work - 2013

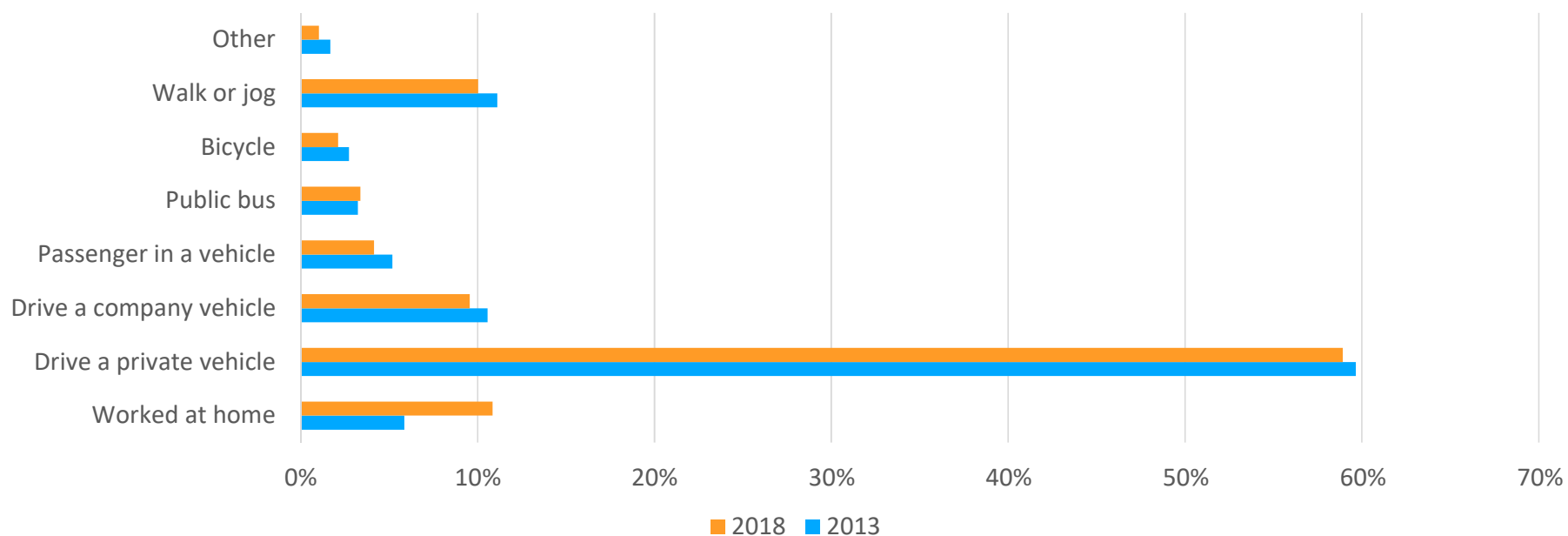


- 36% of work trips are to the CBD
- 80% travel by Car (driver+passenger)

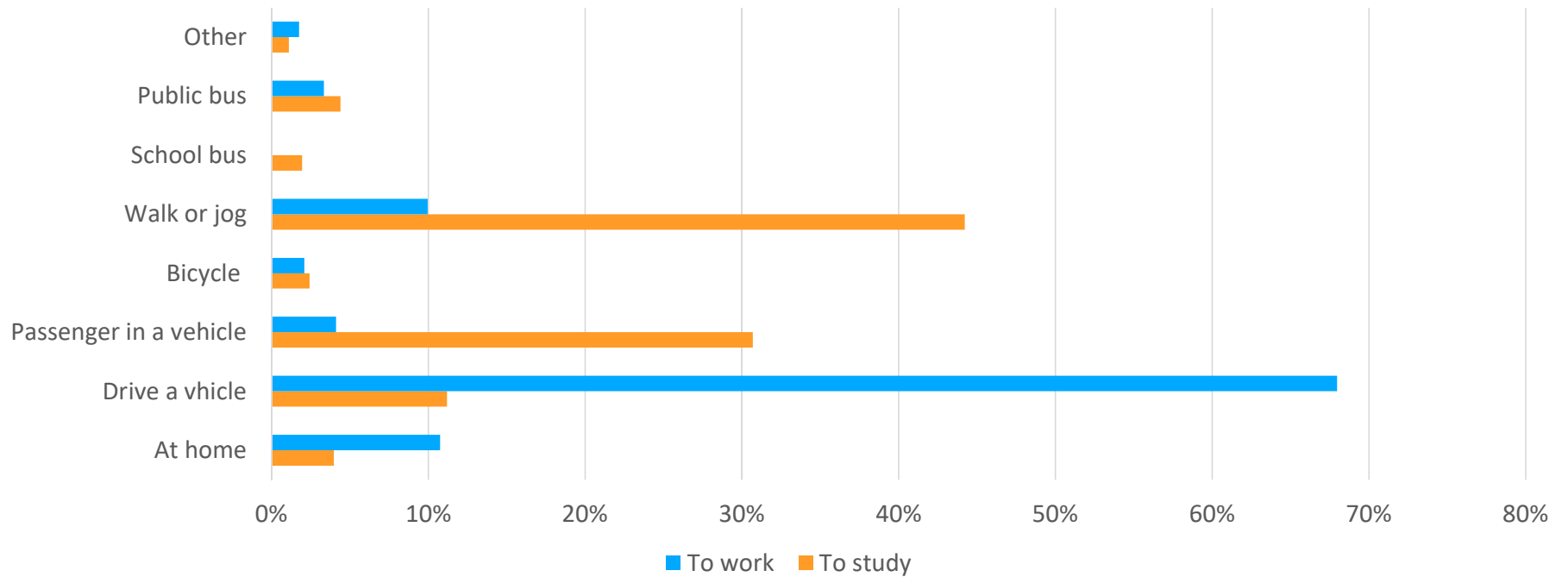


Census Journey to Work - 2018

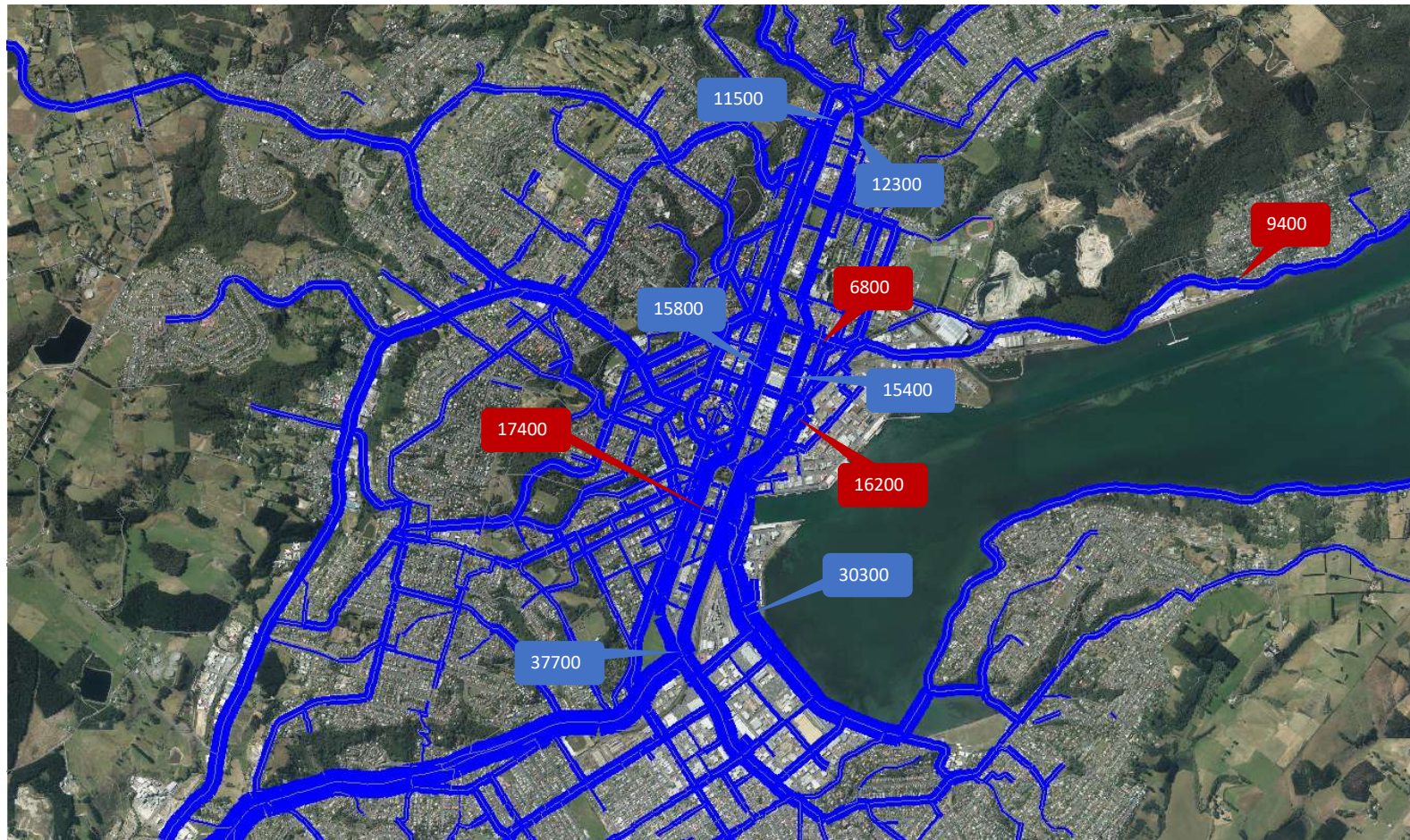
- 73% travel by Car (driver + passenger) in 2018
- Percentage of people working from home almost doubled



Census Journey to Work vs to Study - 2018

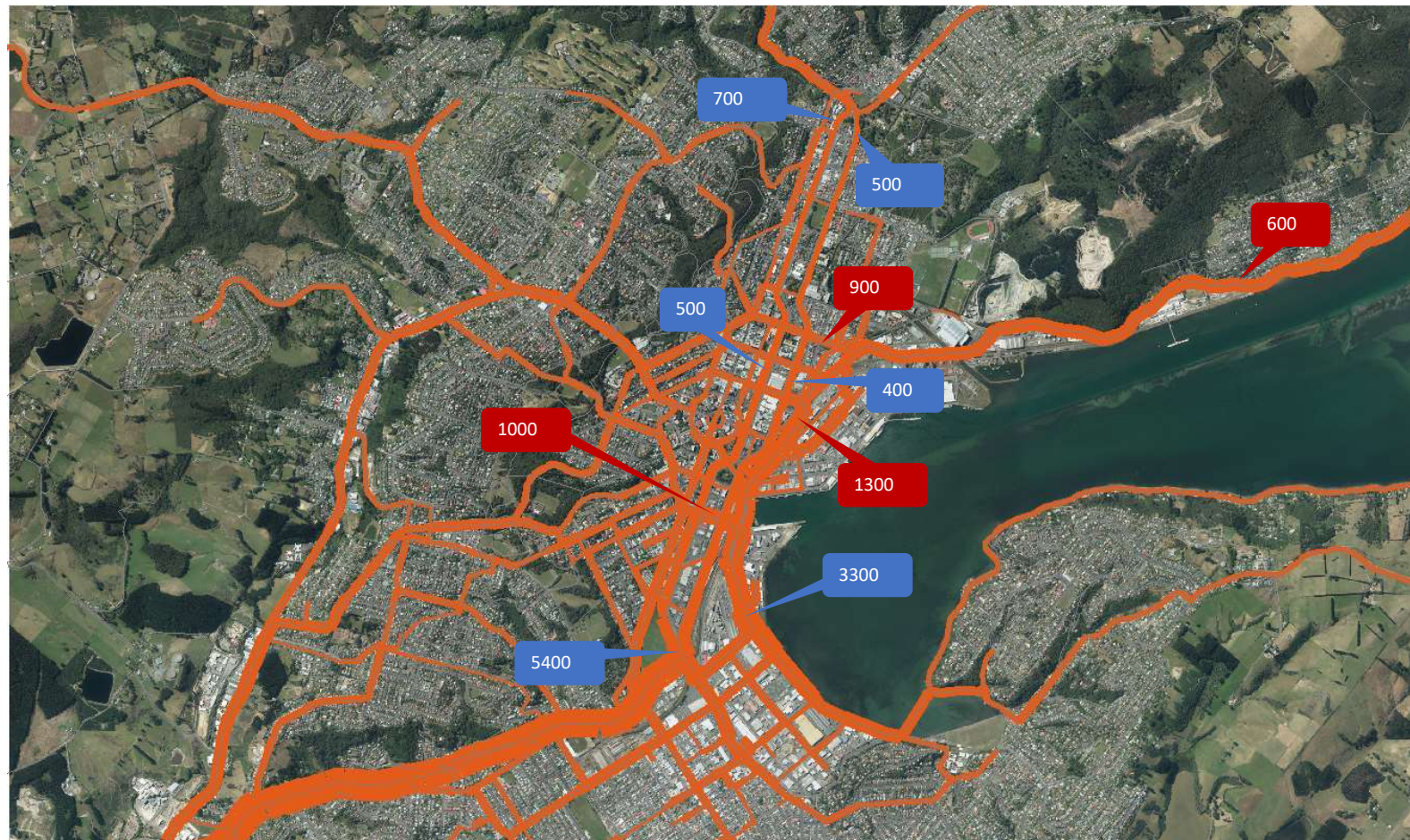


Daily Total Vehicles



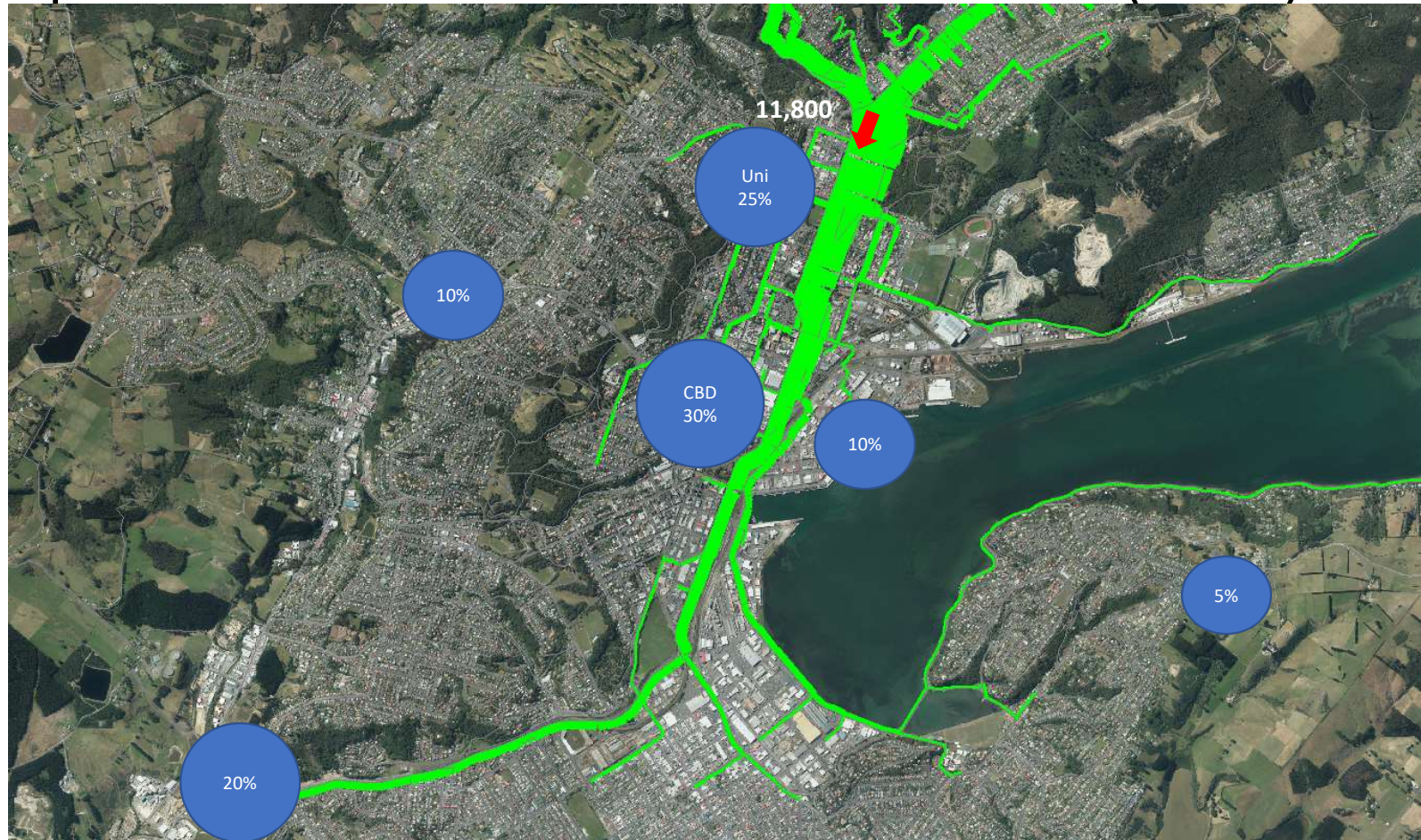
KEY:
East-West
North-South

Daily Heavy Vehicles

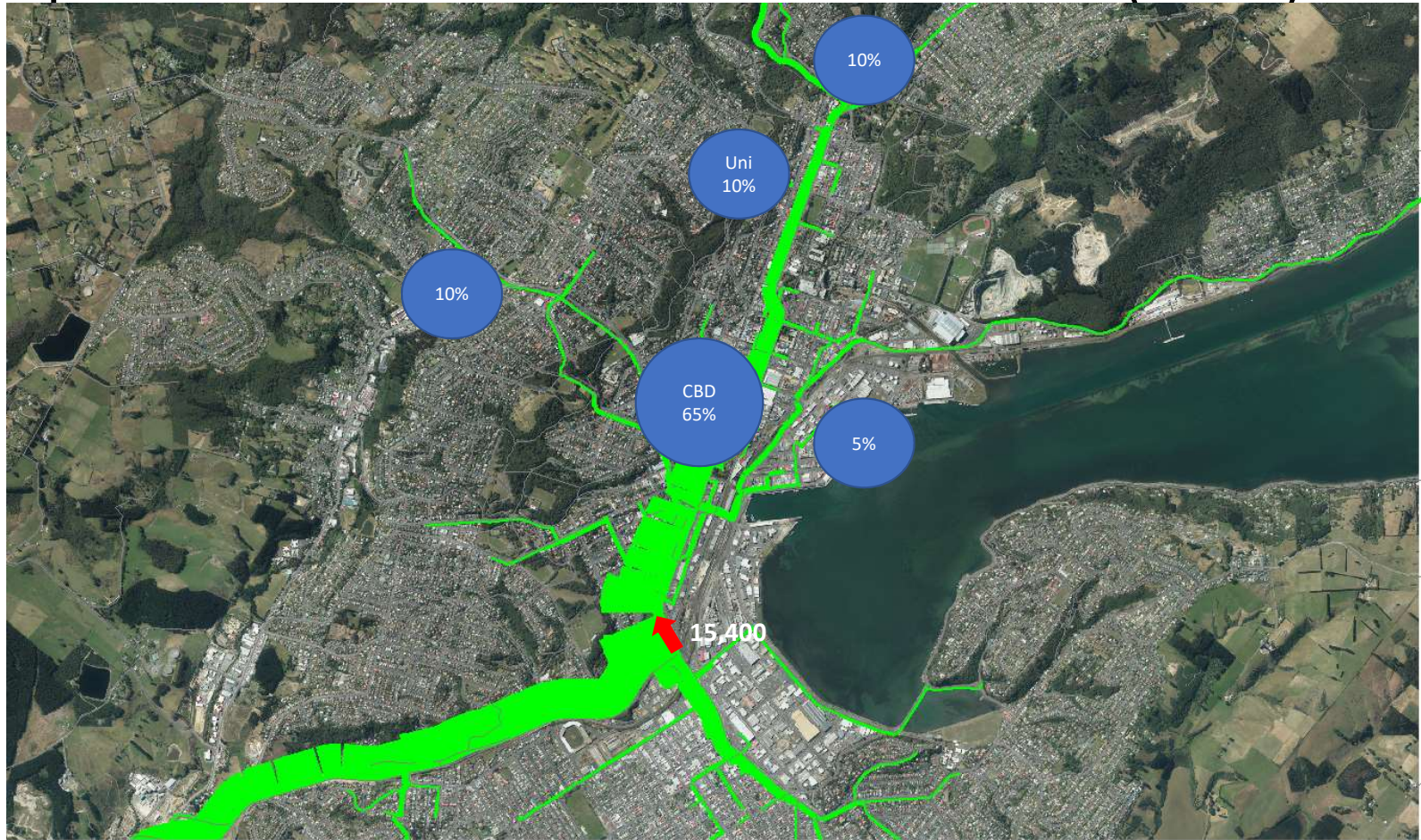


KEY:
East-West
North-South

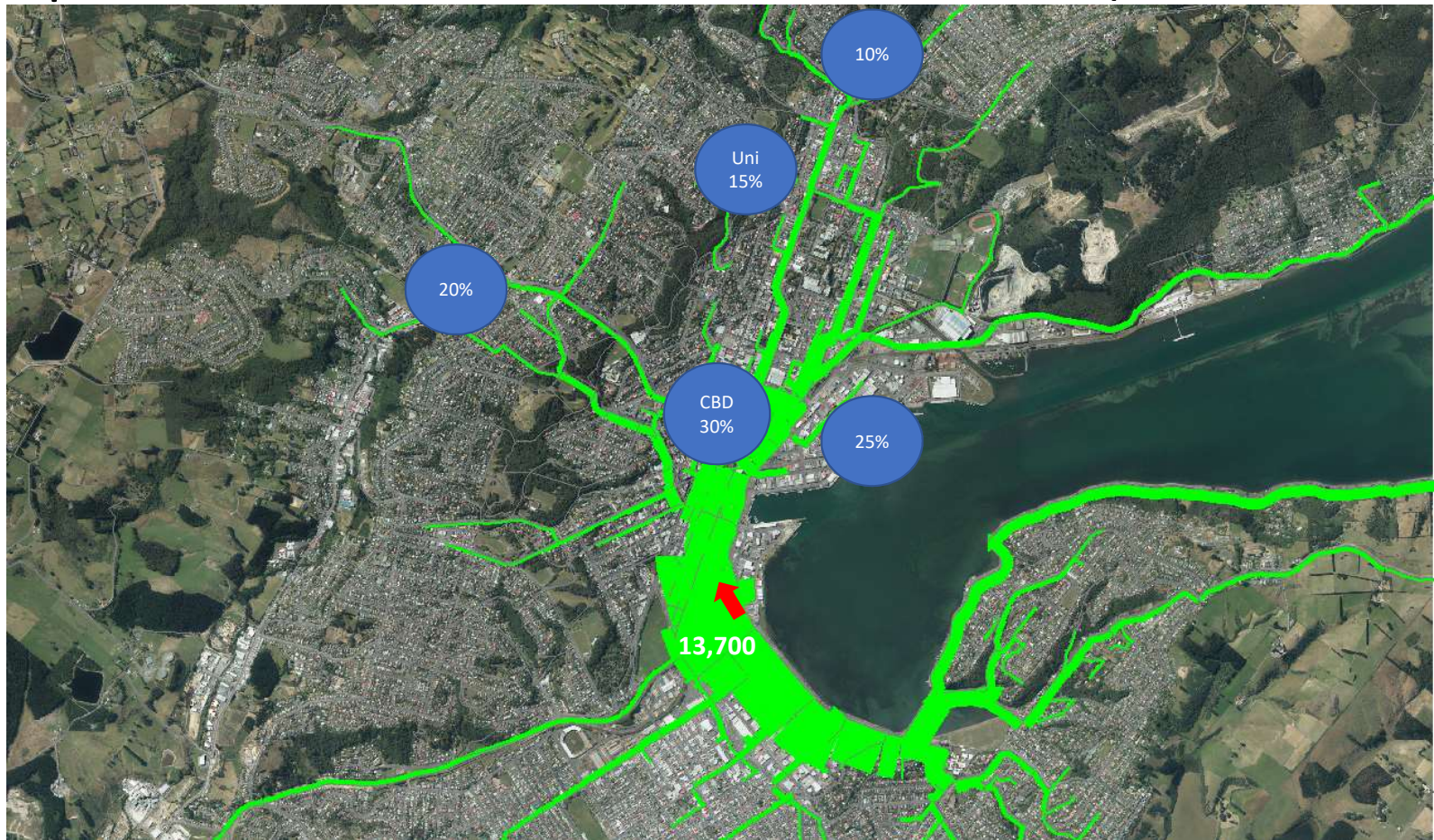
People's Destinations Southbound (SH1)



People's Destinations Northbound (SH1)

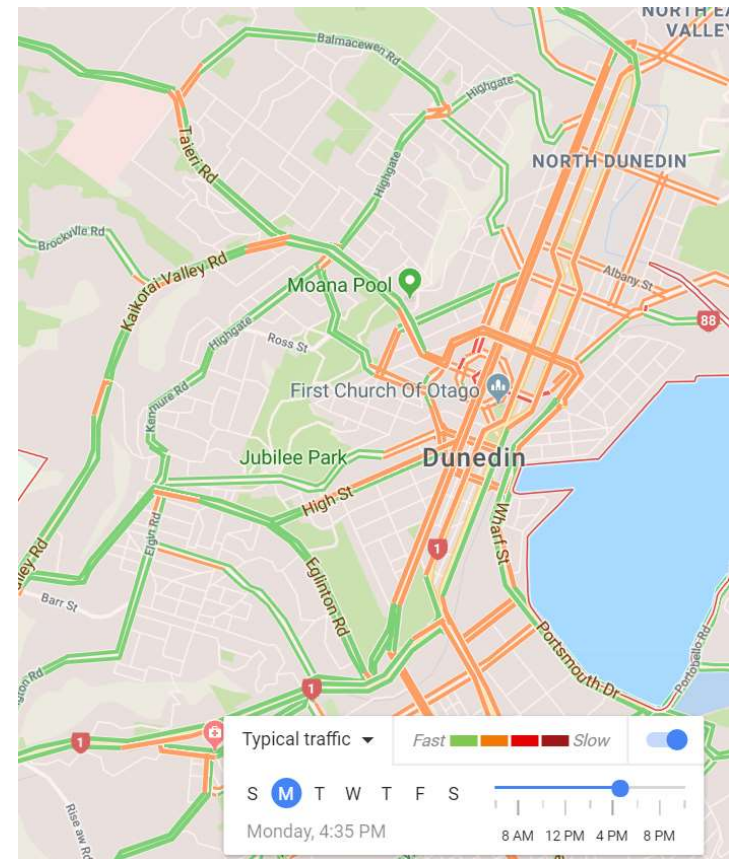
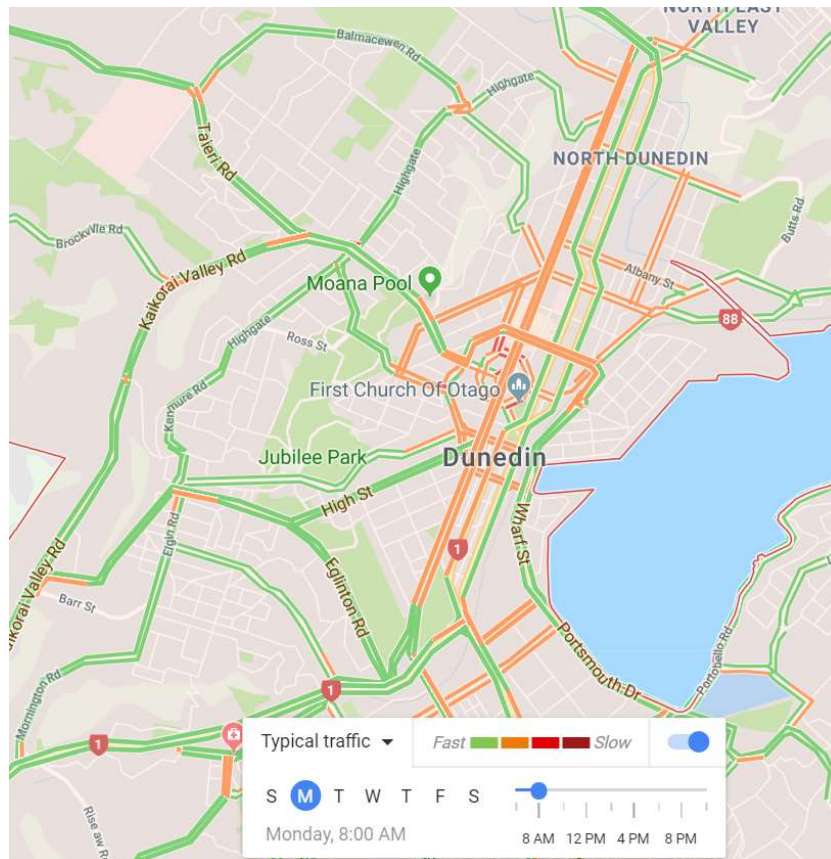


People's Destination Northbound (Wharf St)

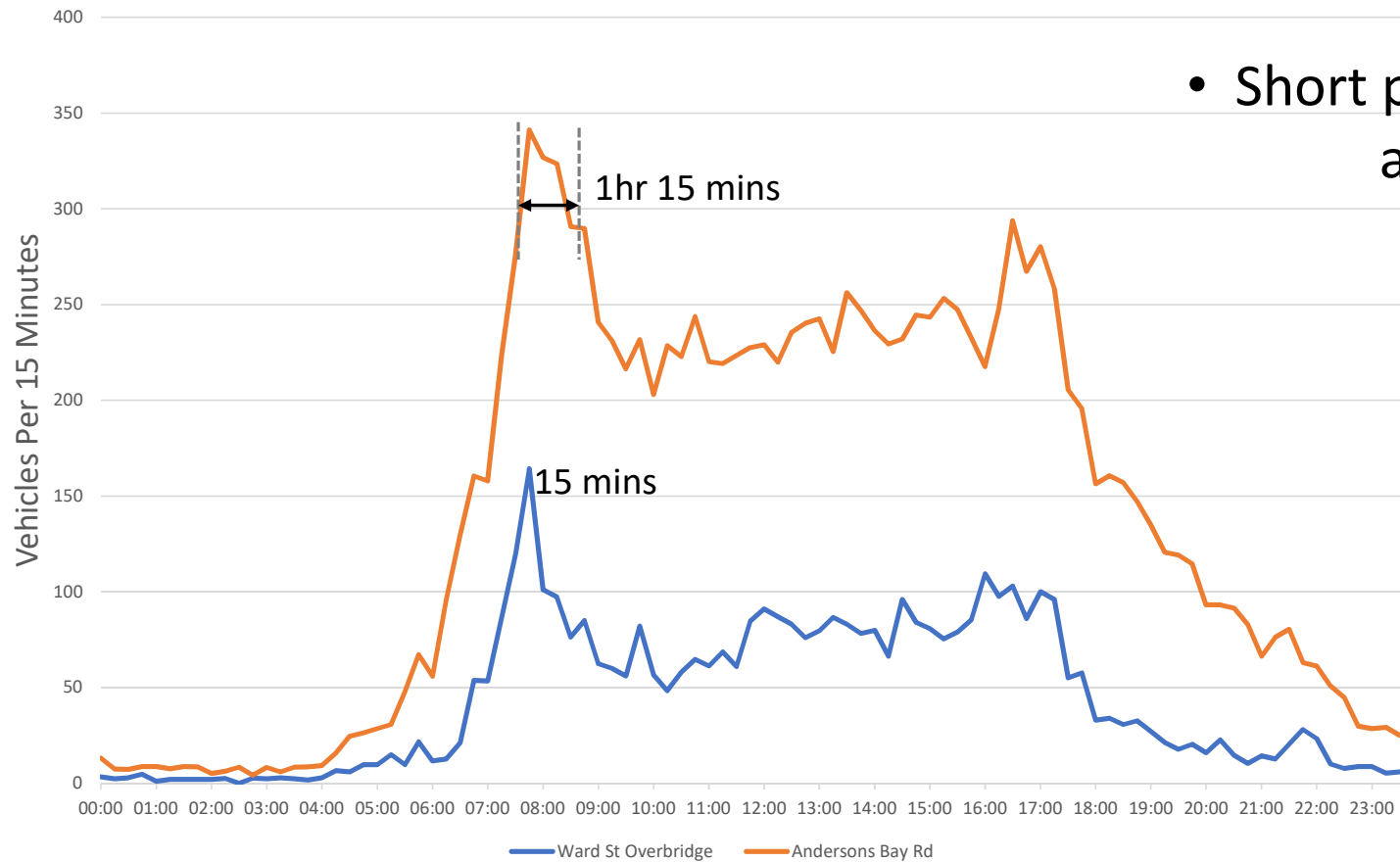


Typical Travel Delays

- Delays not major but some roads are busy

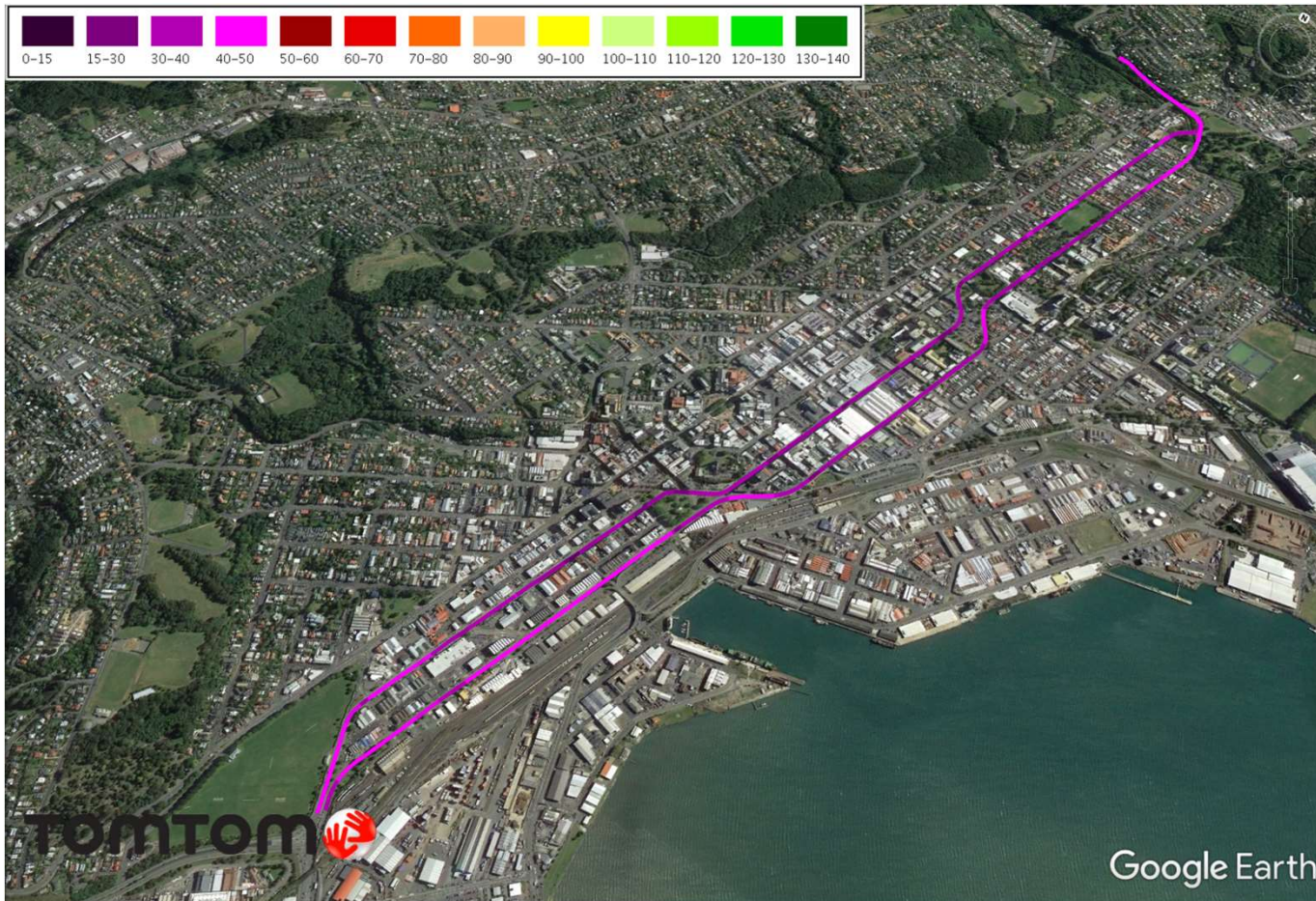


Weekday Inbound Traffic Counts



- Short peaks (~ 15 mins) at some locations

Average Vehicle Speeds



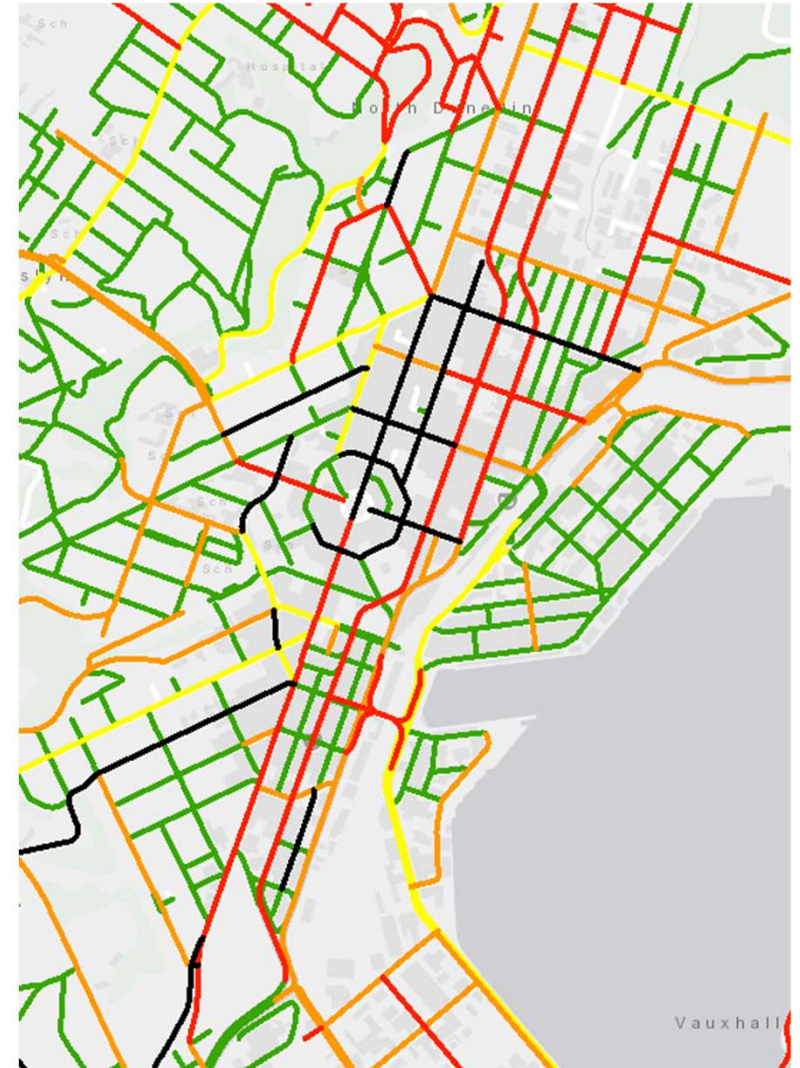
Generally less than 50kph (one way pairs)

Crash Risk

Many streets in the CBD have risks

NZTA Communities at Risk Register:

- Transport-related risk
- Dunedin City 5th highest overall
- Highest urban centre
- Intersection and vulnerable users feature highly



Crash Locations

- Fatal
- Serious
- Minor
- Non Injury



DUNEDIN NETWORK PLANN



EMBER

Summary

- Highest population density around University, followed by South Dunedin
- Employment focused on CBD
- Journey to Work – 80% 2013 73% 2018 by car
- Traffic into City has CBD as the major destination, followed by University area
- There are short periods of high traffic at some locations
- Average traffic speeds on the CBD State Highway section are below 50kph
- There are personal crashes risk on many City Centre roads
- Intersections and vulnerable users feature highly in the crash statistics

